

scienITec.

RelationViewer

Next generation visualization for your Enterprise Service Management



“Asset and IT management are an important part of your daily business. Almost every software solution already has a visualization component. But does it meet your expectations? The simple answer is no. I invite you to follow our journey.”

Dennis Schumann – Head of Software Development at scienITec

The Real Challenge

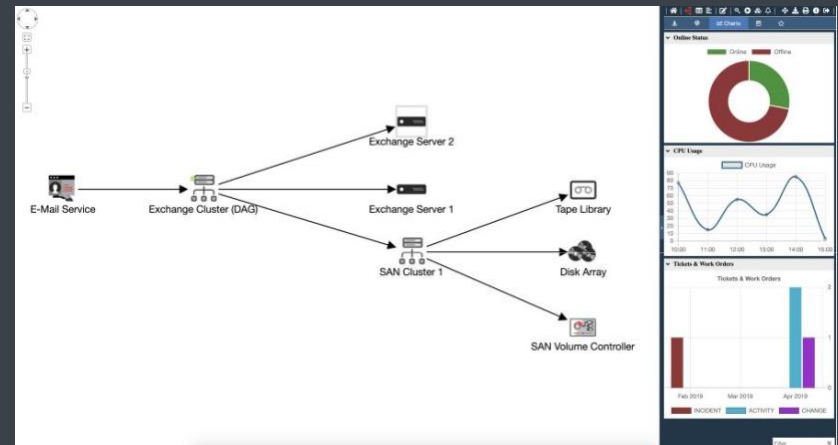
In growing IT infrastructures including Cloud, many systems are often used for different disciplines: Service management tools, ERP, logistics and CRM and production control systems are rarely operated on a uniform platform. The data collected and processed in the systems can often only be complexly merged in data warehouse solutions and are rarely available in real time. In addition, insular solutions make it difficult to take a holistic view of the data relevant for business processes.

From the point of view of service management processes, valuable information for impact analysis and risk assessments is also often found in different tools. This leads to media breaks and prevents a holistic assessment of the facts.



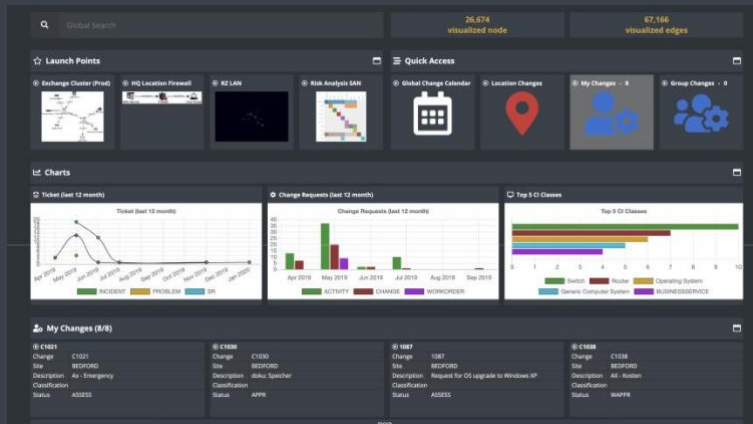
The Solution

The scienITec RelationViewer visualizes data and its connections from different data sources in real time. Seamless integration with leading service management tools such as IBM Maximo, USU Valuation or ServiceNow results in a fantastic user experience. Different views, in 2D and 3D, provide you with insightful information about correlations between your data and supports you, among other things, in the resolution of incidents, planning and risk assessment of change requests and enables you to operate your business services as efficiently in an efficient way.



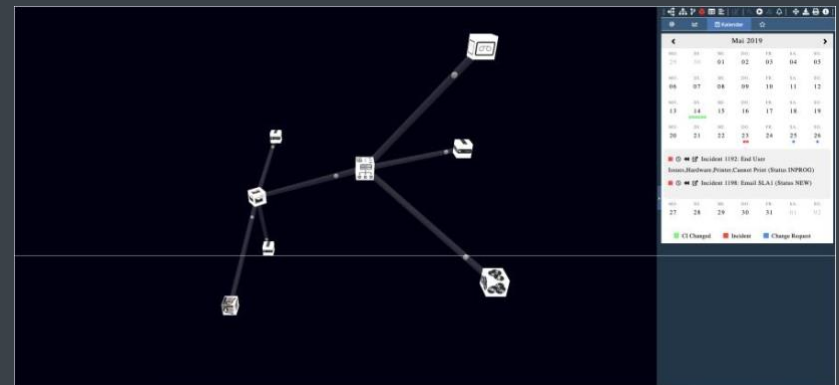
Global Dashboard

Your user dashboard allows quick access to stored queries as well as a global search across all data sources.



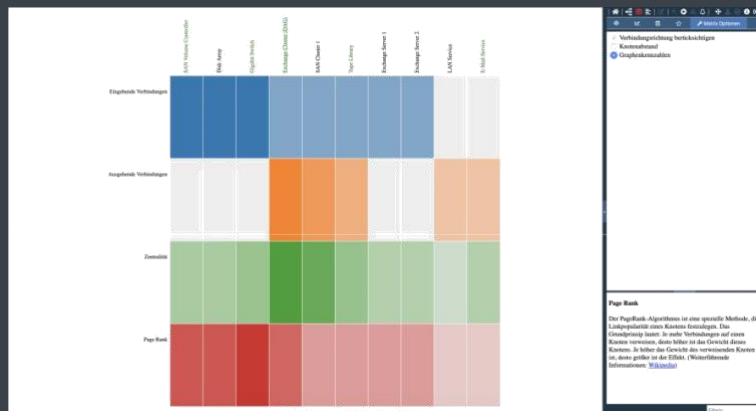
Keep Track of Events

Your personal calendar allows you to track historical events associated with the graph at a glance. With one click, you can see what the graph looked like at the time of the event (rewind function). This enables you to react directly to changes, to learn from the past and thus to be able to detect or avoid disturbances at an early stage.



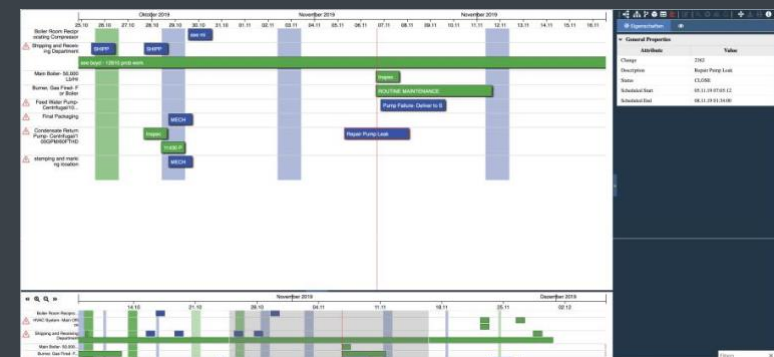
Risk Estimation

By providing and easily visualizing and explaining analytical metrics, impacts and risks can be assessed quickly and robustly. This allows you to make an objective and reasoned assessment of the facts.



Time-related Data

With the help of an event calendar, you can keep track of time-based events in your organization. This is especially necessary if planned events are in different systems, e.g. maintenance windows, change requests, etc.



scienITec.

„ Ready for your next journey? Let`s talk. “

www.scienITec.com

Made in Germany

A scienITec GmbH – Theodor-Fischer-Str. 77 – GY-80999 Munich

T +49 89 7167 767-0

F +49 89 7167 767-99

E info@scienitec.com

W www.scienitec.com

scienITec. – solutions for your future